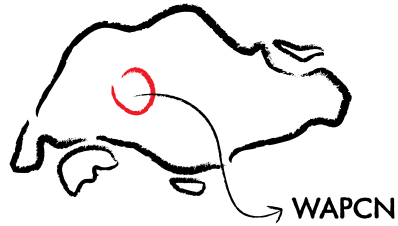


A Guide to Western Adventure Park Connector Network (WAPCN) Walking Trail



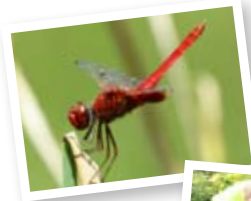
The 20km-long WAPCN links up eight parks in western Singapore including nature parks like Zhenghua Park, Dairy Farm Nature Park and Bukit Batok Nature Park.

The nature belt between Zhenghua Park and Bukit Batok Nature Park forms a 12km trail that is excellent for walking and nature appreciation. This walking trail offers lovely sights and sounds of flora and fauna. Examine the different species of trees, birds, and insects on this stretch. Keep an eye out too for the countless butterflies fluttering around the area.

To get on the trail, do use the easily accessible public transport. Segar LRT Station and Bukit Gombak MRT station are recommended starting points due to the proximity of the MRT stations to our park connectors. If you drive, park your car near one station and return to it via the MRT.



Distance : 12km
Walking time : 4-6 hours



A Guide to Walking Trail on the Western Adventure Park Connector Network (WAPCN)

Highlights

- Rich biodiversity on the WAPCN
- Learning journey at Wallace Education Centre
- Close views of wildlife at the Singapore Quarry
- Scenic views of quarry lake at Bukit Batok Nature Park and Bukit Batok Town Park
- Nature trail at Bukit Batok Nature Park

- Road
- Park Connector
- Walking Trail
- Forest Track
- Water way / Lake
- Toilets
- Fitness Corner
- Shelter
- Carpark
- MRT
- LRT



Bukit Panjang Park Connector



Zhenghua Park



Dairy Farm Nature Park



Singapore Quarry



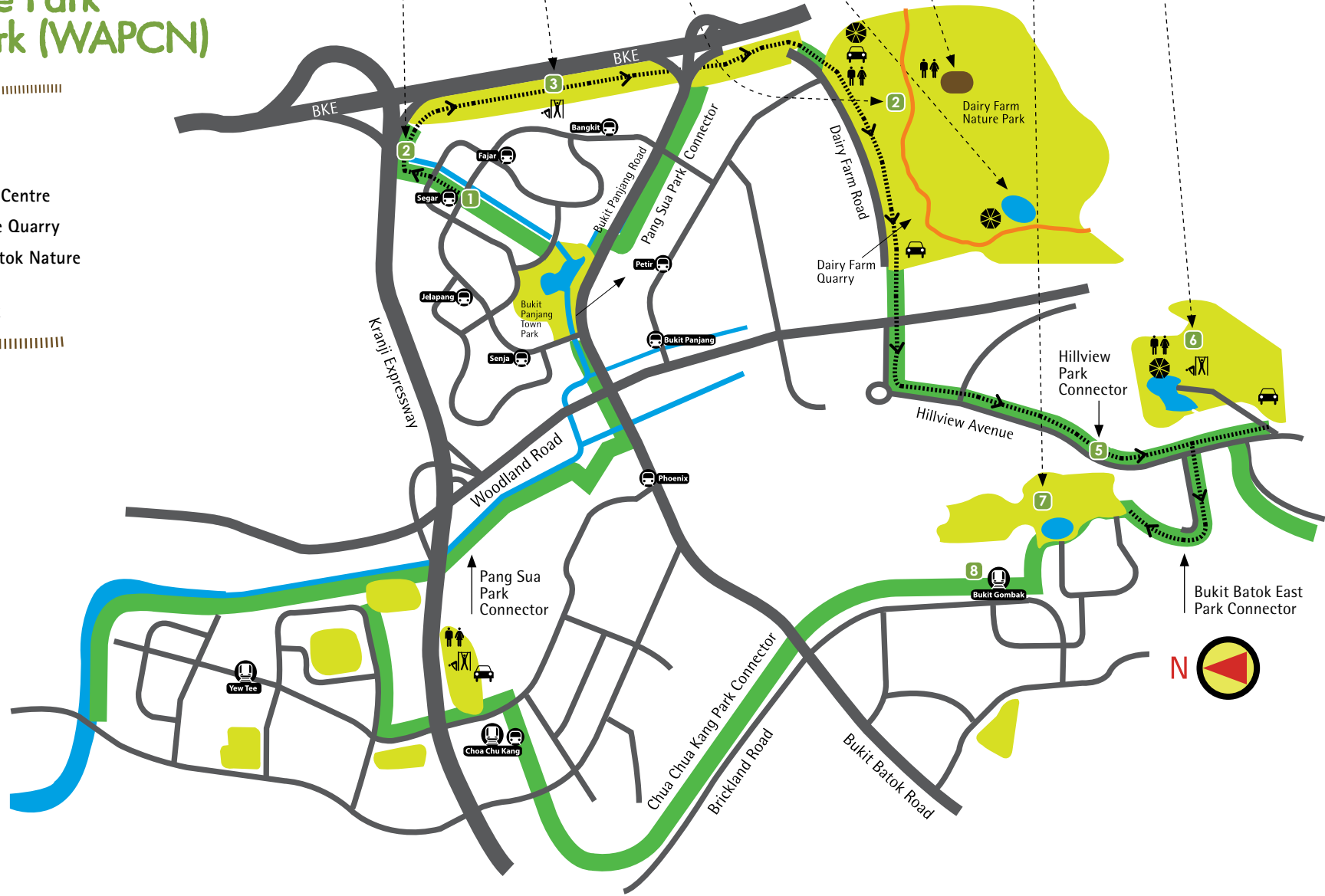
Wallace Centre



Bukit Batok Town Park



Bukit Batok Nature Park





WAPCN

A Guide to Western Adventure Park Connector Network (WAPCN) Walking Trail

→ 1

Segar LRT Station

This is the starting point of the trail. From the station, head east towards Bukit Panjang PC, and then towards Zhenghua Park.

→ 2

Bukit Panjang PC

Look closely at the construction of this park connector - it was built next to the canal. This is an excellent example of the creative use of space in land-scarce Singapore. Typically, a park connector is a linear park that links regional parks or places of interests. Designed with a 4m-wide track, it is conducive for recreational pursuits.

A wide variety of trees are grown on the WAPCN. One of the trees that can be found along the Bukit Panjang Park Connector is the Breadfruit Tree (*Artocarpus altilis*). This is an evergreen tree that can grow up to a height of 30m in humid tropics.

→ 3

Zhenghua Park

This park marks the start of the 12km trek across the nature belt of WAPCN.

This 2.5 km linear park, which is next to the Bukit Timah Expressway (BKE), is nestled right in the middle of the Bukit Panjang housing estate. It links Bukit Panjang Park Connector to Bukit Timah Nature Reserve and the adjoining Dairy Farm Nature Park.

Look out for the variety of trees planted throughout the park. Forest giants, like the Shorea (twenty species have been planted), can be found here. Pockets of wild vegetation enhance the rustic charm of the park.

→ 4

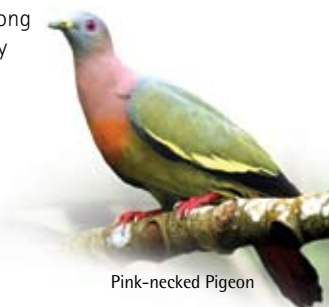
Dairy Farm Nature Park

Wallace Education Centre

Formerly a cowshed, the building is now the Wallace Education Centre. This education centre houses the Wallace Environmental Learning Lab (WELL) and an interpretative centre where you can view exhibits on the changing landscapes of Dairy Farm and Bukit Timah Nature Reserves.

Singapore Quarry

The south-western end of the park offers visitors a scenic view of the Singapore Quarry. The transformation of this site into a wetland has attracted many fauna, including the Little Grebe - a critically endangered bird previously found only in Lorong Halus. You can also see many species of dragonflies here, many of which are rare.



Pink-necked Pigeon



Breadfruit





WAPCN

A Guide to Western Adventure Park Connector Network (WAPCN) Walking Trail

→ 5

Hillview PC

Enjoy the different sights and sounds on the Hillview Park Connector as you make your way to Bukit Batok Nature Park.

Look out for the Yellow-Vented Bulbul and Zebra Dove along this stretch. Other birds you can spot on the WAPCN include the Scaly-breasted Munia and Oriental White-eye.

→ 6

Bukit Batok Nature Park

Take the nature trail that meanders through a well-established secondary forest. Look out for interesting trees along the trail, and make the ascent to the top of the hill where a war memorial lies. For more details on what you can see on this trail, refer to the *Guide on Walking Trail at Bukit Batok Nature Park*.

→ 7

Bukit Batok Town Park

You will need to backtrack a little to reach the last park on this trail. Also known among the locals as Little Guilin or Xiao Guilin, the highlight of the park resembles Guilin in China, where a large granite rock provides a majestic backdrop to a beautiful lake.

→ 8

Bukit Gombak MRT

This station, situated next to Bukit Batok Town Park, marks the end of the trail. Before you embark on your journey home, grab a bite at one of the eateries at the town centre just across the road.

We hope you enjoyed your walk on this trail. For an adventure on bicycle, embark on the WAPCN cycling trail.



White crested laughing thrush



6



7