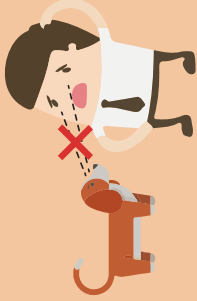


## Tips on what you can do when you encounter aggressive dog(s):



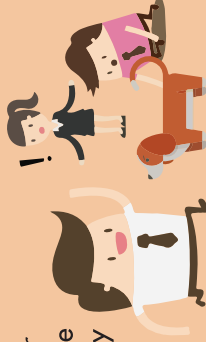
- 1) Stop whatever you are doing immediately.
- 2) Remain calm and quiet. Do not make sudden movements.



- 3) Do not have direct eye contact with the dog(s).
- 4) Look away and back off slowly. Do not turn away from the dog(s) and run.



- 5) Do not try to chase or hit the dog(s).
- 6) Put your child on your shoulders to protect him/her.



- 7) Signal to passers-by for assistance. More people coming to your aid may deter the dog(s) from approaching you.



- 8) If a water body is present, and danger is imminent, entering the water may deter dog(s) from approaching.

Disclaimer: Not every dog behaves in the same way. Do not provoke the dog(s) and avoid approaching it as it may attack in self-defence.

# HOW TO READ A DOG'S BODY LANGUAGE



To feedback, please contact us at  
[www.av.s.gov.sg/feedback](http://www.av.s.gov.sg/feedback) or call  
1800 476 1600 (24-hours)

Accurate as of 1 April 2019



ANIMAL &  
VETERINARY  
SERVICE

# How To Read A Dog's

## Body Language

You can get a better understanding of the dog's possible aggression and predict what it is likely to do.

### Guarding



The dog feels threatened and tries to protect himself, his territory or his pack members.

**Ears:** Perked-up and forward

**Eyes:** Wide open and alert

**Mouth/Teeth:** Mouth slightly open, teeth bared and could be snapping or gnashing its teeth

**Body:** Tense and rigid, hackles raised and standing tail

**Tail:** Rigid and held straight out from body, could be bristled up

**Vocalization:** Loud alert bark, growl and snarl

### Predatory/Before taking flight or chase



The dog is still assessing the situation and will attack anytime.

**Ears:** Perked-up

**Eyes:** Wide-open staring and very alert

**Mouth/Teeth:** Mouth slightly open, excited and panting

**Body:** Tense, crouched low in a predatory position, could be quietly sniffing the air, legs bent and poised to run or ready to spring forward

**Tail:** Low and extended straight out from the body

**Vocalization:** None

### Dominant Aggressive



The dog shows confidence and expresses its social dominance. It will turn aggressive if challenged.

**Ears:** Forward (may be spread to the side to form a wide V-shape) or back (close to head)

**Eyes:** Narrow or staring challengingly

**Mouth/Teeth:** Mouth opened, drawn back to expose teeth bared in a snarl

**Body:** Tense, upright, hackles standing, completely dominant position, stiff-legged stance with body leaning forward slightly

**Tail:** Stiff, fluffed up and may be seen to quiver or vibrate from side-to-side

**Vocalization:** Snarl, growl, loud bark

### Fearful/ Fearful Aggressive



The dog shows fear and will possibly attack if provoked or forced into a corner or a vulnerable situation.

**Ears:** Back

**Eyes:** Slightly narrowed and pupils dilated

**Mouth/Teeth:** Mouth closed with lips slightly curled, teeth may be visible

**Body:** Tense, slightly lowered in a submissive position

**Tail:** Tucked with little or no movement

**Vocalization:** Low whine or moaning-type of bark, possible growling

### Alert



The dog detects something of interest or unknown, and is assessing if there are any threats or actions to take.

**Ears:** Perked-up, may twitch to catch sounds

**Eyes:** Open normally or wide opened

**Mouth/Teeth:** Mouth closed or slightly open with teeth covered

**Body:** Leaning slightly forward in a dominant position and standing on tiptoe

**Tail:** Up and horizontal, wagging slightly, not stiff or bristled

**Vocalization:** Quiet/ low whine/ alarm bark