

Wetland Detective - Fact Sheet

Mangrove Fauna - Reptile

Estuarine Crocodile & Malayan Water Monitor

Location: | In and around Sungei Buloh Wetland Reserve



Estuarine Crocodile

The Estuarine Crocodile is the largest living reptile. They are often seen basking in the sun along the river banks during low tide. During high tide, they can be seen floating like a log with only the snout exposed above the water.

The Estuarine Crocodiles seen in the reserve are usually less than 3 metres in length. Sometimes, they can be seen feeding on fishes which are abundant in the river.

Where to spot them:

Near streams, rivers, mudflats, mangroves, marshes, ponds

What do they feed on:

Crabs, fishes, birds, turtles and monitor lizards

Special Feature:

Adapted to living in a saline environment, it has the ability to remove excess salt using a gland in its tongue.



Malayan Water Monitor

They are often seen patrolling waterways or swimming across the river or ponds in the reserve. They swim well and can remain underwater for a few minutes. They are also good climbers and sometimes can be seen relaxing horizontally on a branch high up in a tree.

Like all reptiles, Malayan Water Monitors depend on their surroundings to maintain their body temperatures, and are often seen basking in the sun along the walking trails. They are sometimes mistaken for crocodiles.

Where to spot them:

Near streams, canals, rivers, mudflats, mangroves, marshes, ponds

What do they feed on:

Crabs, fishes, birds, eggs, small mammals, frogs and carcasses

Special Feature:

Possessing an excellent sense of smell, it "tastes" the air using its forked tongue.



Wetland Detective - Worksheet

Mangrove Fauna - Reptile

Estuarine Crocodile & Malayan Water Monitor

Location: | In and around Sungei Buloh Wetland Reserve

Tick ✓ the correct answers. Each question can have more than 1 answer.

1. Which is the largest living reptile?

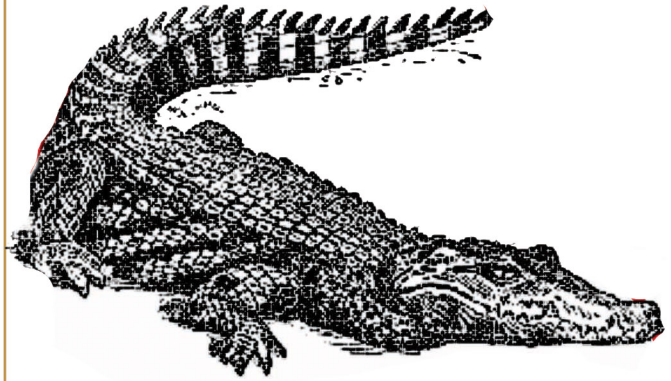
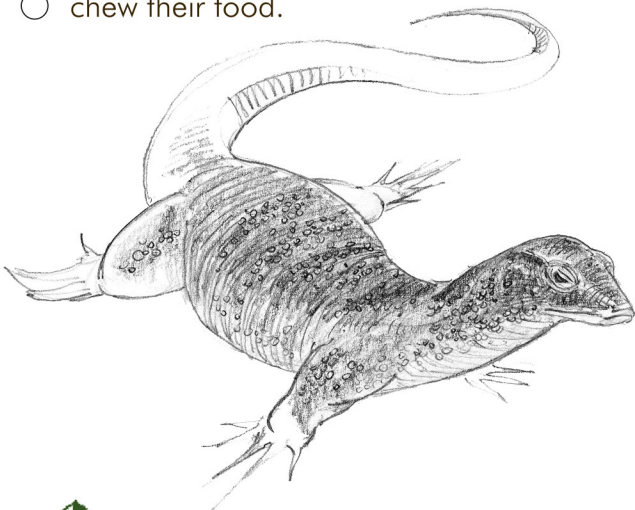
- ☐ Malayan Water Monitor
- ☐ Dog-faced Water Snake
- ☐ Estuarine Crocodile

2. The Estuarine Crocodile and Malayan Water Monitor are good swimmers because

- ☐ they can paddle fast using their 4 legs.
- ☐ they have a powerful tail to help them swim.
- ☐ they have webbed feet.

3. Strong jaws and sharp teeth help both the Estuarine Crocodile and Malayan Water Monitor to

- ☐ catch their prey without losing it.
- ☐ fight their opponent.
- ☐ chew their food.



4. Where can you spot the Estuarine Crocodile and Malayan Water Monitor in their natural habitat?

- ☐ near streams, rivers, mudflats
- ☐ mangroves, marshes, ponds
- ☐ roads, concrete walkway near your home, busy Orchard Road

5. The has the ability to remove excess salt using a gland in its tongue.

- ☐ Malayan Water Monitor
- ☐ Estuarine Crocodile
- ☐ Common Sun Skink

6. The has an excellent sense of smell and "tastes" the air using its forked tongue.

- ☐ Malayan Water Monitor
- ☐ Estuarine Crocodile
- ☐ Paradise Tree Snake

