

# SISTERS' ISLANDS MARINE PARK

# DIVE TRAIL



# CODE OF CONDUCT OF DIVERS



No stepping  
on coral



No stirring  
the sediment



Do not disturb any  
marine animals



No feeding of fishes



No littering



Do not buy souvenir made  
of coral and marine animals



No spear fishing



Do not anchor on  
coral reefs



Do not collect marine  
animals (living/dead)



Use mooring buoys



Report environmental  
observations

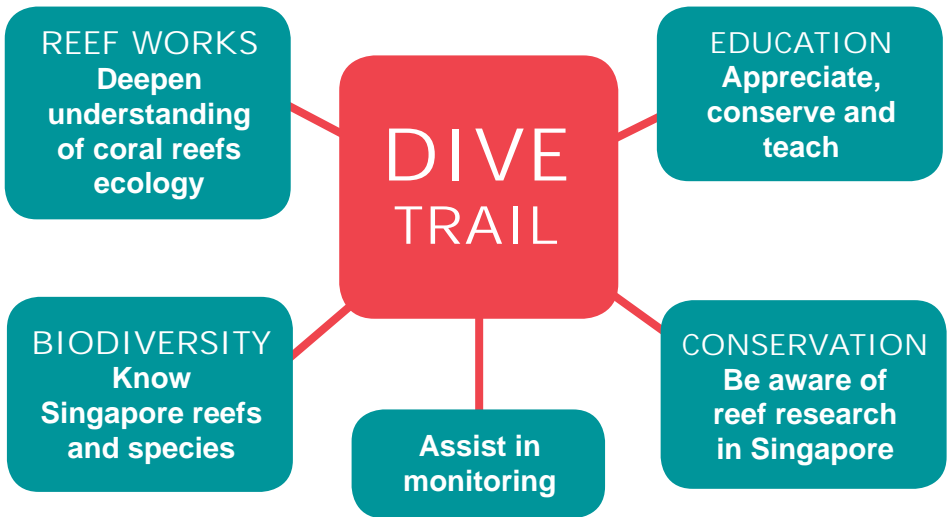


Submit monitoring  
data online



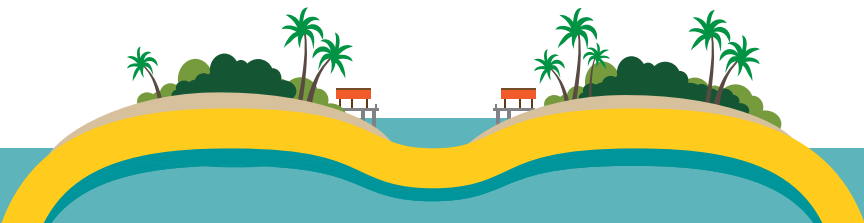
# INTRODUCTION

Welcome to the Sisters' Islands Marine Park Dive Trail, the first of its kind in Singapore. This is part of the initiative to establish the Marine Park as a Marine Park for ALL, including the active Singapore dive community. It offers a unique and novel underwater experience with the following aims:



***“Only if we understand can we care. Only if we care will we help. Only if we help shall they be saved”.***

*Jane Goodall*



# SISTERS' ISLANDS MARINE PARK DIVE TRAIL

## LEGEND



### Shallow Dive Trail

Depth: 4–6 m  
Reef Zones:  
Reef crest and  
upper reef slope.

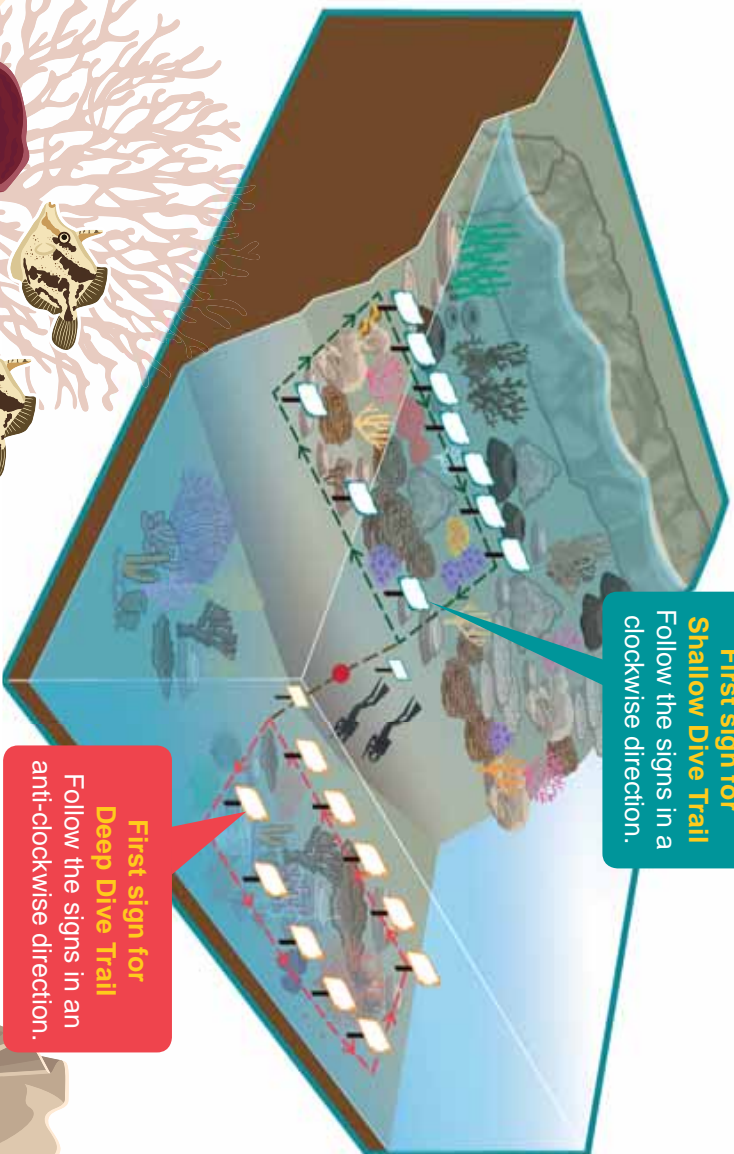


### Deep Dive Trail

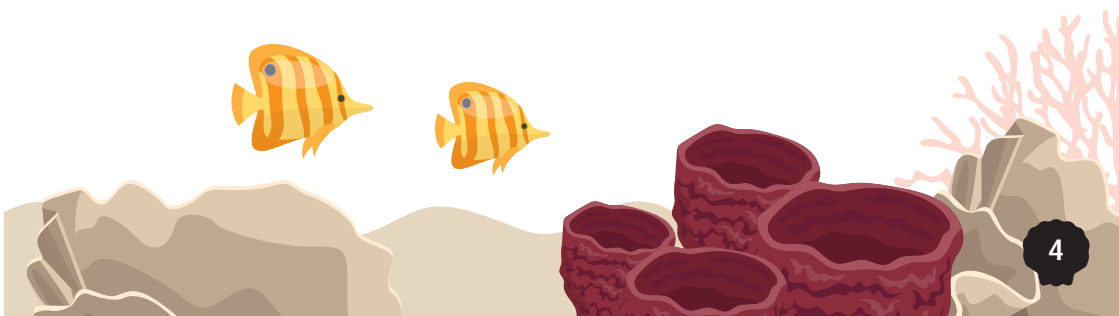
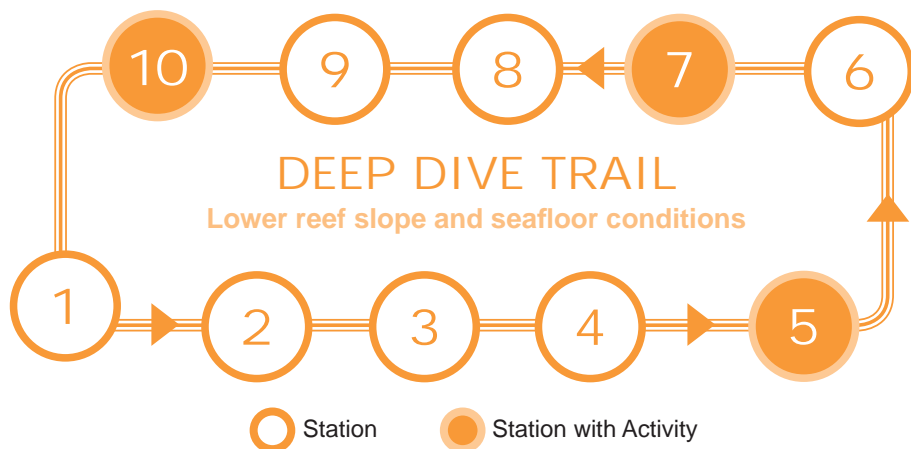
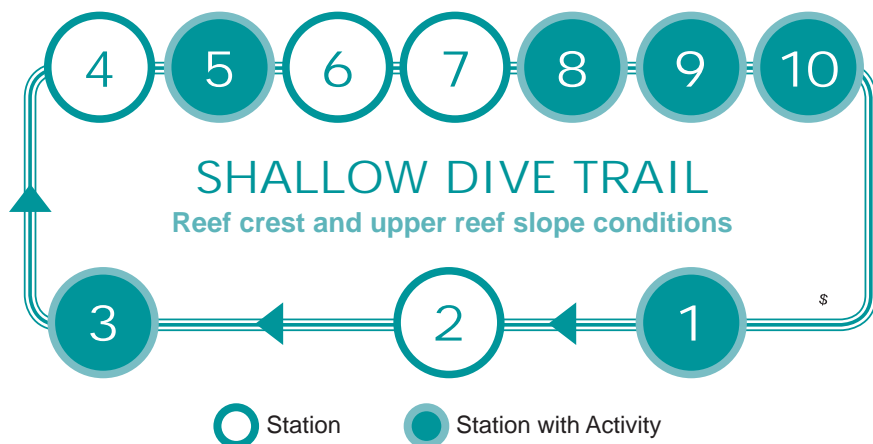
Depth: 10–16 m  
Reef Zones:  
Lower reef slope  
and seafloor.

**First sign for  
Shallow Dive Trail**  
Follow the signs in a  
clockwise direction.

**First sign for  
Deep Dive Trail**  
Follow the signs in an  
anti-clockwise direction.



# SISTERS' ISLANDS MARINE PARK DIVE TRAIL



# DEEP DIVE TRAIL ACTIVITIES

## WELCOME

Observe the conditions at the sea floor. Is it dark?  
Is the live hard coral cover high?

## STATION 1

Spot the green-coloured branching Sun Coral and the tree-like Black Coral.

## STATION 2

Spot the different types of sea fans and sea whips around you.  
Did you notice any symbiotic animals on them?

## STATION 3

Observe the Barrel Sponges near this sign and along the Trail for symbiotic animals.

## STATION 4

Spot the different types of sea stars and feather stars along the Trail.  
Observe the 5-point symmetry that Echinoderms have.

## STATION 5



Which is the furthest number-shaped sign you can see from the main sign?

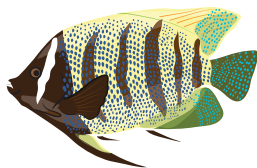
On \_\_\_\_\_ at \_\_\_\_\_,  
(Date) (Time)

the estimated water visibility was

m

## STATION 6

The loud engine sounds are from passing ships.



## STATION 7



Help us conduct a mini fish survey from this sign to the "End of Mini Fish Survey" sign.

As you swim, count the number of fishes within the sea space 2 m above the rope and 2 m on the right and left of the rope.

Number and Type of fishes you observed:



Damselfishes



Fusiliers

Others:

## STATION 8

Spot the soft corals around you.

Did you notice any symbiotic animals attached to them?

## STATION 9

Spot nudibranchs along the Trail.

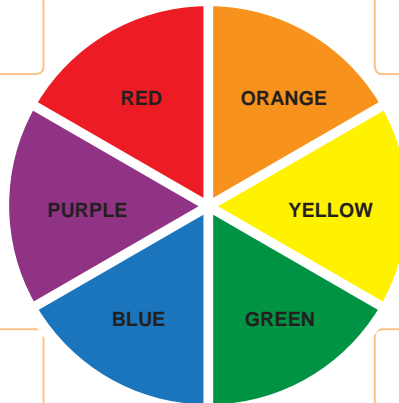
## STATION 10



Take a photo. Compare the result with the colour wheel at the Shallow Dive Trail. Record the colour you see here:





# SHALLOW DIVE TRAIL ACTIVITIES

## WELCOME

Observe the reef conditions around you.  
Is the light level high? Is the live hard coral cover high?

## STATION 1



Help us conduct a mini fish survey from this sign to the "End of Mini Fish Survey" sign.

As you swim, count the number of fishes within the sea space 2 m above the rope and 2 m on the right and left of the rope.

Number and Type of fishes you observed:



Damselfishes



Fusiliers

Others:

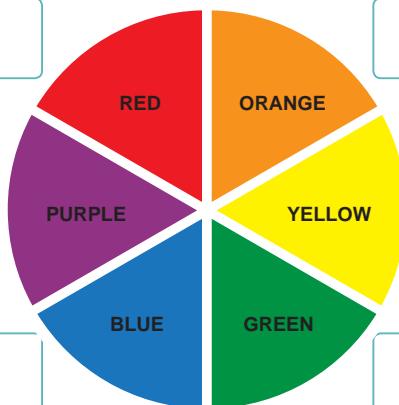
## STATION 2

Look out for feather-duster worms and flatworms.

## STATION 3



Take a photo. Compare the result with the colour wheel at the Deep Dive Trail. Record the colour you see here:





## STATION 4

Observe the live Giant clam and see if you can find the mantle and the siphon.

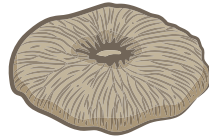
## STATION 5



As you swim along the Trail, spot the different forms of hard corals. Tick those you observe.



Boulder

☐☐

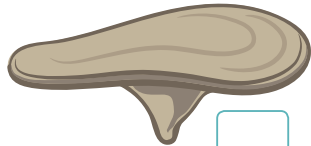
Free-living  
mushroom corals



Encrusting

☐

Table-shaped

☐

Plate

☐

Branching

☐

Sub-massive

☐

Leaf shaped  
(foliose) coral

☐

# SHALLOW DIVE TRAIL ACTIVITIES

## STATION 6

Look at the edges of different hard coral colonies.  
Can you spot the "death zone" between them?

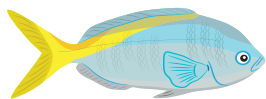
## STATION 7

Look for different coloured algae and zoanthid colonies near this sign and along the rest of the Trail.

## STATION 8



How many of these fishes can you spot near the Pinnacle?  
Count the number of each fish type and record these below:



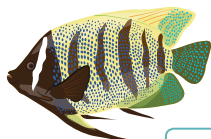
Fusilier



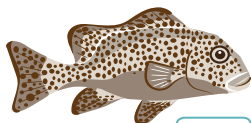
Damselfish



Parrotfish



Angelfish



Sweetlips



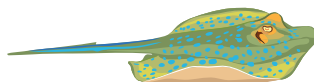
Grouper



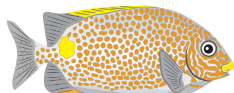
Cleaner Wrasse



Butterflyfish



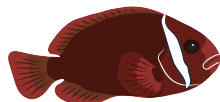
Stingray



Rabbitfish



Filefish



Clownfish

Others

## STATION 9



Measure a transplanted coral using the scale found at the back of your Trail guide.

Take a photo of the coral with the scale.

Share your photo of the coral colony at the Sisters' Islands Marine Park website.

On \_\_\_\_\_, the length of colony T \_\_\_\_\_ is  
(Date)

cm

## STATION 10



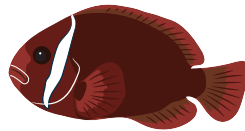
Count and record the number of anemones and anemone-fishes around the sign:

On \_\_\_\_\_, there are  
(Date)

anemones

There are:

Tomato  
clownfishes



False  
clownfishes

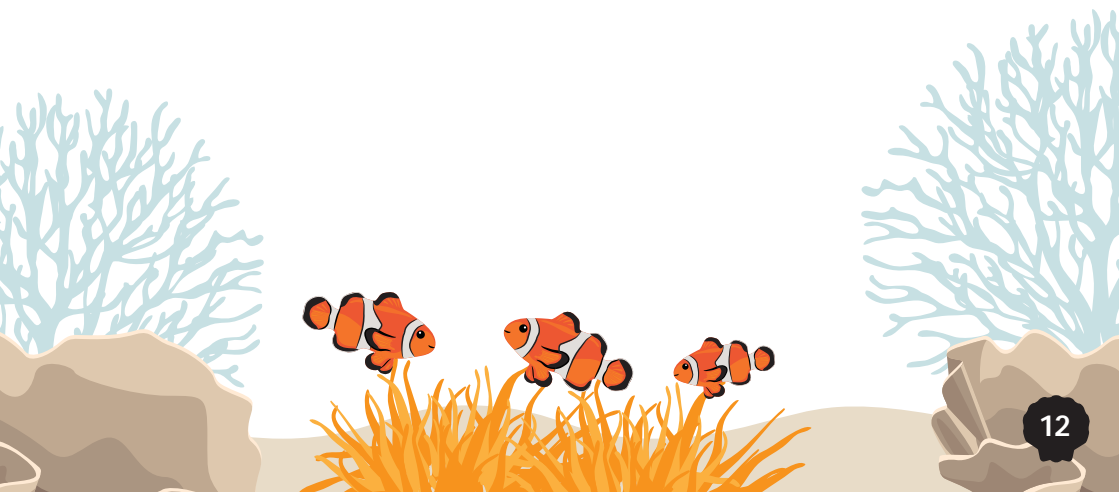


Please do not go too close to their homes  
as you will stress them severely.



# GUIDE ON REEF FISHES

# GUIDE ON NUDIBRANCHS





# AFTER THE DIVE TRAIL

## AFTER THE DIVE

### What you can do:

- Discuss your “discoveries”.
- Share with us at [www.nparks.gov.sg/sistersislandsmarinepark](http://www.nparks.gov.sg/sistersislandsmarinepark)
  - photographs and interesting sightings.
  - the data you collected from the mini-research activities along the Trail.
  - any damage you had observed or enquiries about the Trail.
- Read more about the reef life, the Trail and the data collected (half-yearly update) from divers’ research at The Sisters’ Islands Marine Park website.  
[www.nparks.gov.sg/sistersislandsmarinepark](http://www.nparks.gov.sg/sistersislandsmarinepark)
- We hope that you will visit the Trail again!



**nparksbuzz**

Share your love for nature with us at  
**#nparksbuzz**

[www.nparks.gov.sg/sistersislandsmarinepark](http://www.nparks.gov.sg/sistersislandsmarinepark)

Copyright © National Parks Board 2015.

All Rights Reserved. No part of this publication may be reproduced or transmitted in any form or by any means, electronic or mechanical, including photocopying, recording, or any information storage and retrieval system, without prior written permission from the publishers.

