

Ornamental Community Gardens

Ornamental Gardens often have a display of various flowering and foliage plants with special aesthetic characteristics (e.g large flowers, unique patterns on foliage, bonsai). Ornamental Gardens would usually require a relatively high amount of maintenance due to the need of pruning and fertilizing to keep the plants aesthetically pleasing and healthy.






Community Garden at Bukit Batok Zone 2 RC



Community Garden at Chinese Garden

Growth Conditions for Ornamental Gardens

Light Requirement 	Water Requirement 	Soil Requirement 	Fertilising Regime
<ul style="list-style-type: none">• Full to Partial Sun is preferred as many plants in ornamental gardens require more sunlight when accommodating to flowering plants.	<ul style="list-style-type: none">• A moderate amount of water is required for most ornamental plants. Therefore more often watering is required.	<ul style="list-style-type: none">• Approved Soil Mix 3:2:1, Loamy Soil: Compost: Sand	<ul style="list-style-type: none">• Regular fertilising every fortnight is required to keep the plants healthy and to induce flowering.

Recommended Plants



Silver Goosefoot
(*Syngonium wendlandii*)
Height: 0.5m – 0.6m



Butterfly Pea
(*Clitoria ternatea*)
Height: -



Malay Ginger
(*Cheilocostus speciosus*)
Height: 4m



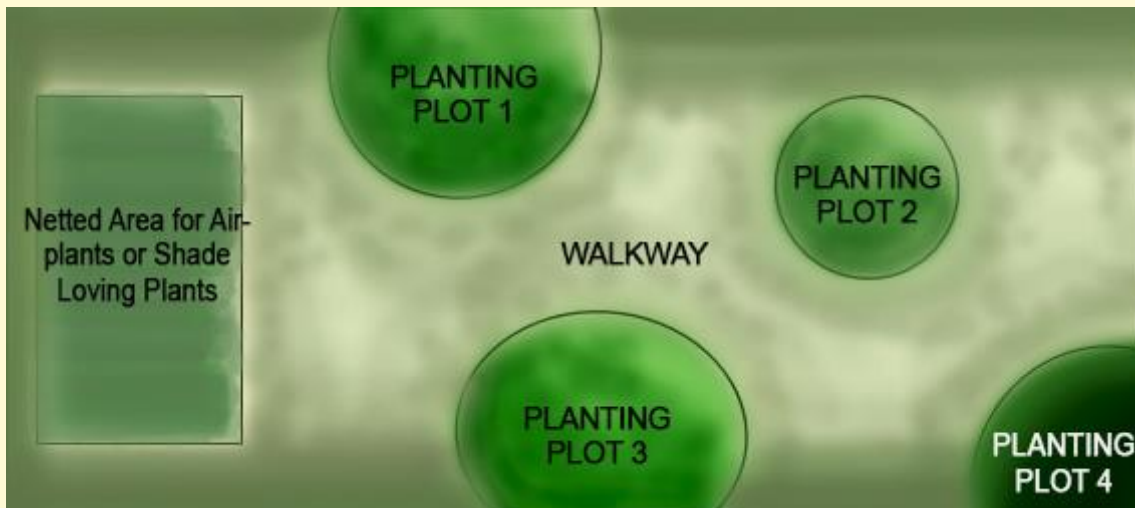
Purple Bauhinia
(*Bauhinia purpurea*)
Height: 6m-15m



Alternanthera
(*Alternanthera cv.*)
Height: 0.2m



Blushing Bride Airplant
(*Tillandsia ionantha*)
Height: 0.1m



Example of a Garden Layout (Each planting Plot can have 1-2 different species depending on what the community would like to plant within each plot. E.g Tall and Medium height plants together.)

For a step by step process, you can refer to 'Planning Your Community Garden' handout.

For more information on plant selection and plant choices, refer to <https://florafaunaweb.nparks.gov.sg>