



Nursery Accreditation Scheme (NAS) Provisional Factsheet

About NAS (Provisional)

The Nursery Accreditation Scheme (Provisional) (“NAS (Provisional)”) aims to assist new entrants to the landscape industry to understand the requirements of operating a new landscape nursery. Entities which currently do not operate a landscape nursery, but intend to do so by tendering for NParks’ nursery land parcels, are required to apply for this scheme. The NAS (Provisional) also encourages businesses to gradually step up their professional capabilities and financial sustainability during the operational phase of their new nursery.

Requirements of NAS (Provisional)

Entities on this scheme will need to demonstrate their commitment in bringing growth to their nursery business.

Terms and Conditions

1. Existing entities who are operating a nursery and are able to meet the requirements of NAS) will not be eligible for NAS (Provisional).
2. The entities should participate in NParks nursery land tenders within three (3) years of obtaining NAS (Provisional) accreditation
3. Without prejudice to other rights available to it, NParks reserves the right not to renew the NAS (Provisional) if the entity did not submit a tender for NParks’ nursery land tenders within the validity period of their NAS (Provisional).
4. Any entity which has failed the application for NAS (Provisional) will only be eligible to reapply one (1) year from the date of receipt of the rejection letter.
5. Without prejudice to other rights available to NParks, entities (including their shareholders and directors), who are found to have wilfully declared incorrect or false information to NParks, will have their NAS (Provisional) status denied or revoked and will not be eligible to apply or reapply for NAS (Provisional) for a subsequent three (3) years.
6. Entities must not be under any Petition for Judicial Management or Petition for Winding Up; under any Originating Summons for a Notice of Meeting to consider a Scheme of Arrangement, or under a Judicial Management Order, a Scheme of Arrangement or a Winding Up Order.

Validity

The NAS (Provisional) will be valid for a term of three (3) years starting from the date of successful accreditation. Entities can submit an application for renewal of the NAS (Provisional) up to six (6) months before the expiry of its accreditation. Entities are strongly encouraged to use this time to tender for NParks' nursery land once they are ready to do so.

Assessment Criteria

Applicants will be assessed on the following criteria:

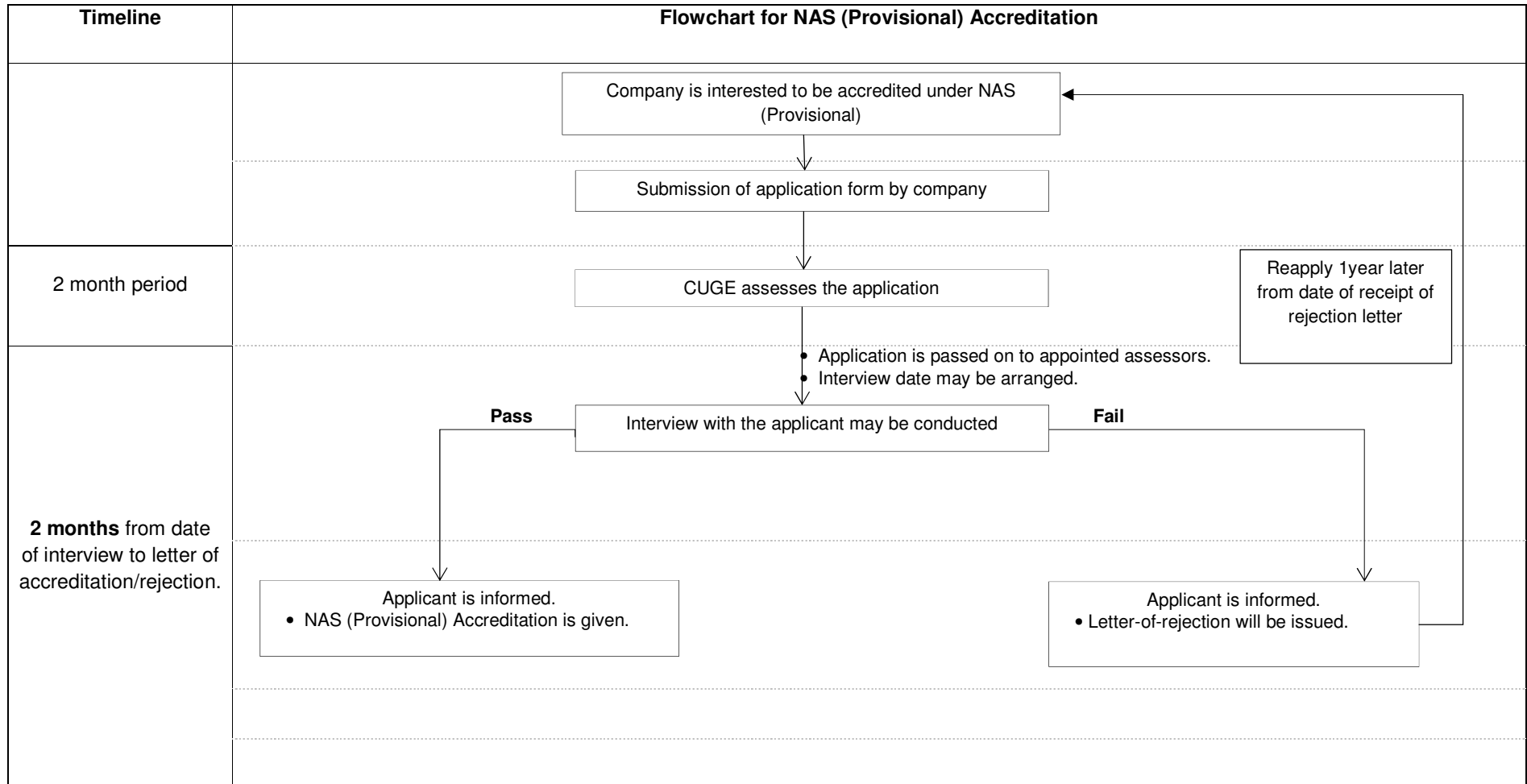
1. **Professional and Technical certifications, accreditations, and expertise** – The incoming nursery management team will be assessed based on their relevant professional and technical backgrounds and achievements¹. Historical relevant working experience, including past nursery management or operational experience, should be detailed.
2. **Proposed Business Plan** – The nursery management team should detail their intended business plan², including the individual tasks and roles required to operationalize it, and how the company plans for its sustainability for the long-term.
3. **Financial Capability** – The nursery management team should demonstrate their financial capabilities in funding the initial setup and operation of a new landscape nursery business. Entities should submit a Bizfile printout from the Accounting and Corporate Regulatory Authority (ACRA), detailing the paid-up capital amount. The Bizfile search must have been conducted within three (3) months of the date of application for the NAS (Provisional). The projected capital expenditure for the tenure of the land parcel (e.g. total of 9 years for a 3+3+3 year tenancy model) should be included for the assessment of financial sustainability.

Disclaimer

The assessment may be based on the comparative evaluation of the different companies.

¹ Includes past working experience, formal certifications and accreditation schemes such as Certified Practising Horticulturist, Certified Landscape Architect, etc.

² Examples of business model activities include Production, Holding, Wholesale and Retail, or a mixture of these activities (e.g. Production and Wholesale). Other nursery related activities, such as commercial processing of Approved Soil Mix (ASM), landscape project implementation (i.e. construction works) and landscape maintenance works should also be included if the company intends to engage in such activities.



National Parks Board
 Centre for Urban Greenery and Ecology (CUGE)
 Email: Chia_yan_shan@nparks.gov.sg
 DID: 64647309